

LED

SGS

GZP23-013561

2023 09 13

2023 09 13 ~ 2023 09 21

RoHS 2011/65/EU		II	(EU) 2015/863-
(PBBs)	(BBP)	(PBDEs)	(DBP)
(DIBP)		(2-) (DEHP)



Jessie-JX Li

scan to see the report



		SGS ID	
SN1	A11	CAN23-0098898-0001.C011	,
SN2	A12	CAN23-0098898-0001.C012	,

(1) 1 mg/kg = 1 ppm = 0.0001%

(2) MDL=

(3) ND = (< MDL)

(4) "-" =

RoHS	2011/65/EU	II	(EU) 2015/863-	(PBBs)
(PBDEs)		(DBP)	(BBP)	(2-)
(DEHP)		(DIBP)		

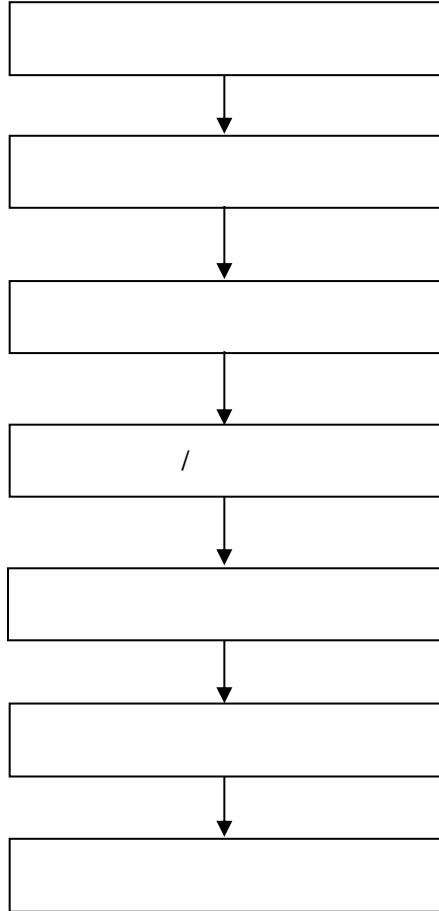
			MDL	A11	A12
(HeptaBDE)	-	mg/kg	5	ND	ND
(OctaBDE)	-	mg/kg	5	ND	ND
(NonaBDE)	-	mg/kg	5	ND	ND
(DecaBDE)	-	mg/kg	5	ND	ND
(DBP)	1000	mg/kg	50	ND	ND
(BBP)	1000	mg/kg	50	ND	ND
(2-) (DEHP)	1000	mg/kg	50	104	ND
(DIBP)	1000	mg/kg	50	ND	ND

- (1) RoHS (EU) 2015/863
- (2) IEC 62321 EN 62321
- (3) 2021

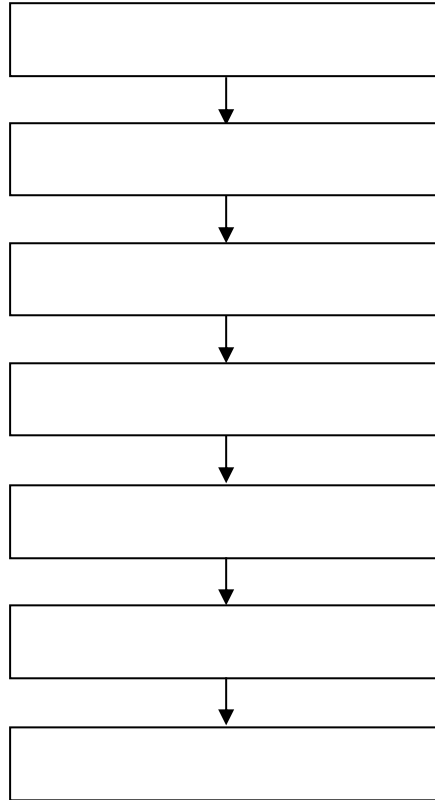
CANEC23009889806

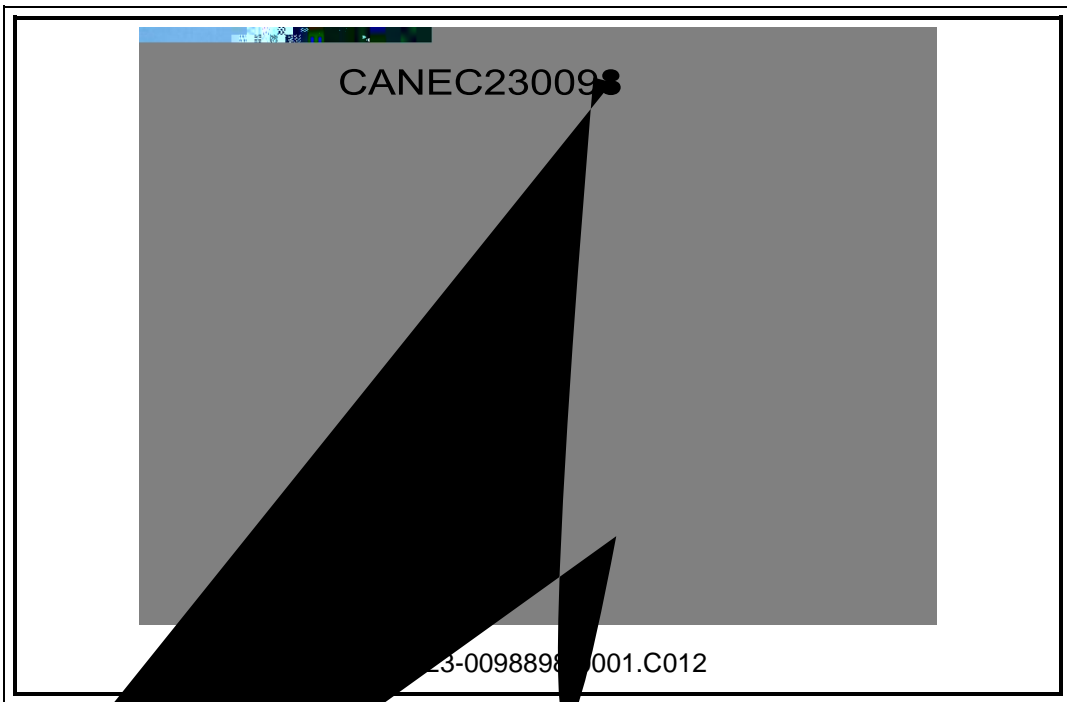


PBBs/PBDEs



Phthalates





SGS
